



## Hillside Grove

**£1,225,000**

Located in a Prime residential road in Mill Hill, is this fantastic extended 5 bedroom detached family house (2216 sq ft) situated in this quiet turning, which is a continuation of Parkside. Within easy access of both Mill Hill Park and Arrandene Open Space and approximately a mile from the coffee shops restaurants and transport links at Mill Hill Broadway.

On the ground floor the property benefits from a Dining Room, Through Reception Room, Office, Kitchen - breakfast room and ample storage. The first floor boasts 5 bedrooms and 2 bathrooms ( 1 en-suite). Further benefits include a garage, off-street parking, and within easy access of both Mill Hill Park and Arrandene Open Space and approximately a mile from the coffee shops restaurants and transport links at Mill Hill Broadway. Sole Agent.

### Viewing

Please contact our Mill Hill Office on 02089590011 if you wish to arrange a viewing appointment for this property or require further information.



5



2



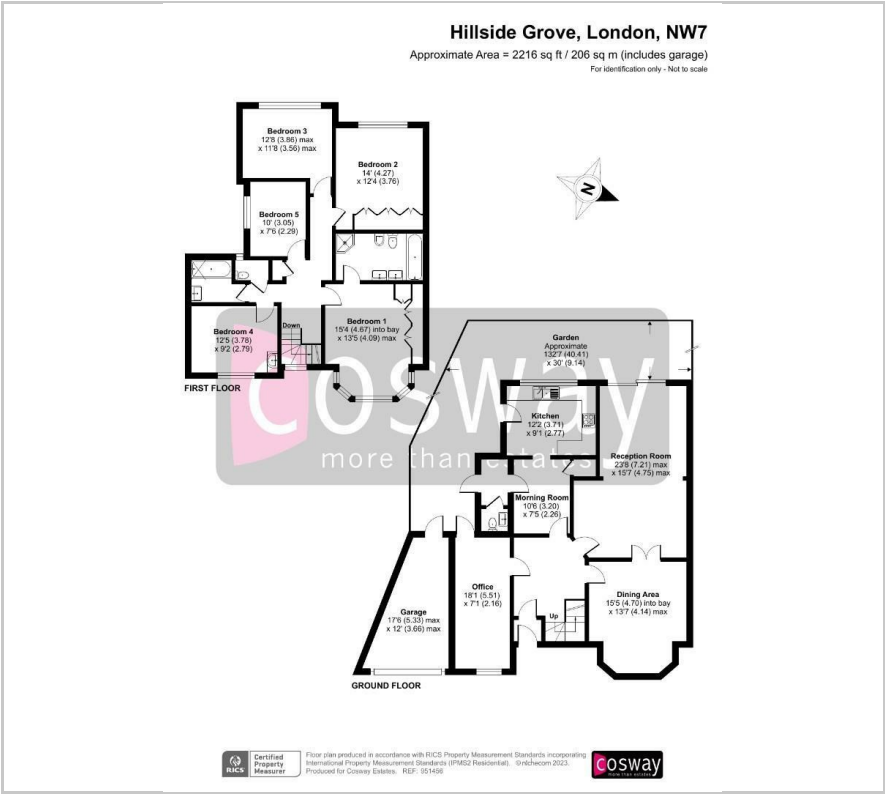
4



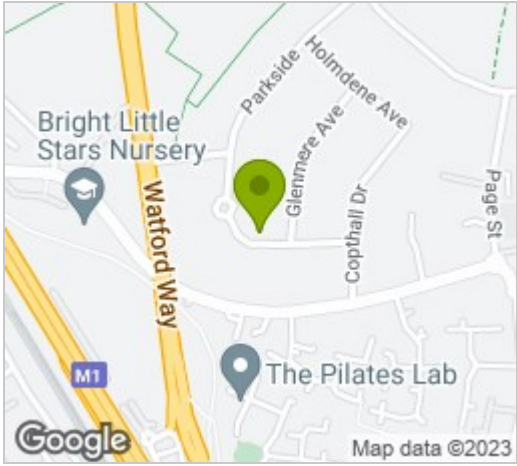
D



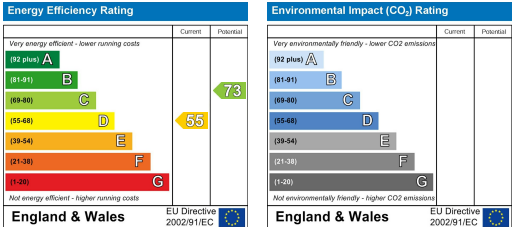
Floor Plan



Area Map



Energy Efficiency Graph



These particulars, whilst believed to be accurate are set out as a general outline only for guidance and do not constitute any part of an offer or contract. Intending purchasers should not rely on them as statements of representation of fact, but must satisfy themselves by inspection or otherwise as to their accuracy. No person in this firms employment has the authority to make or give any representation or warranty in respect of the property.